



BILLION  
WISE  
INVESTMENT  
SOLUTIONS

# BWIS TRADING BOTS WHITE PAPER

---

Elucidating the technical features of innovative cryptotrading bots and unveiling the prospects available to investors

Version 0.1.0 | January 20, 2025

# INTRODUCTION

Welcome to the world of innovative cryptotrading bots presented by Billion Wise Investment Solutions (BWIS). In this document, we will introduce you to our unique approach to automated cryptocurrency trading, focused on leadership and high profitability. Our cryptotrading bots, crafted by a team of professionals, have become an integral part of BWIS's successful journey.

Innovation, efficiency, and guaranteed profitability are the key aspects you will discover as you delve into the world of BWIS. From precise strategies and algorithms to the principle of mutually beneficial collaboration with investors, our cryptotrading bots transform trading into an exciting and lucrative experience.

Join us in this guiding document where we will unravel the secrets and features of our bots, aimed at achieving not only financial success but also mutually beneficial growth. BWIS is your partner in the world of cryptotrading, where innovation and trust shape the future of financial possibilities.



## The primary objective of the White Paper

The White Paper of Billion Wise Investment Solutions (BWIS) is a document primarily aimed at elucidating the technical features of our innovative cryptotrading bots and unveiling the prospects available to investors.



## Technical aspects of our bots

Our team of engineers and financial experts has developed products based on advanced algorithms and strategies. Each BWIS cryptotrading bot is a meticulously crafted system ensuring precision and efficiency in the dynamic cryptocurrency market environment.



## Investment opportunities

The White Paper also extensively covers the investment opportunities available to investors opting for our bots. Guaranteed daily profits ranging from 0.30% to 2.50% make our products attractive to those seeking stable and predictable income.



## WIN-WIN System

We aspire to create an environment where our investors and our company interact on mutually beneficial terms. The WIN-WIN system we propose makes investors key participants in our collective success.



## Conclusion

The BWIS White Paper is not merely a technical document; it is a guide for investors seeking to understand how our products can ensure successful investments in the world of cryptotrading.

# TECHNICAL DETAILS

## 01 / Architecture and Technologies

- + BWIS bots are engineered on a high-performance microservices architecture utilizing containerization technologies such as Docker and Kubernetes orchestration.
- + The configuration management system is based on Git to ensure simplicity of changes and updates.

## 03 / Integration of Indicators and Orders

- + Support for various technical indicators such as RSI, MACD, and Bollinger Bands.
- + Deployment of limit and stop-limit orders to optimize trade execution.

## 05 / Risk Management System

- + Development of risk management algorithms that factor in market volatility, portfolio size, and trading strategies.
- + Application of Value at Risk (VaR) methods for assessing potential losses.

## 07 / Artificial Intelligence

- + Application of machine learning technologies for analyzing large datasets and improving the prediction of market trends.
- + Training the bot on historical data to enhance adaptability to evolving market conditions.

## 02 / Trading Algorithms

- + Application of hybrid algorithms, encompassing a blend of technical analysis, artificial intelligence, and machine learning for predicting market movements.
- + Development of strategies that consider macroeconomic factors, news events, and sentiment analysis from social networks.

## 04 / Blockchain and Smart Contracts

- + Implementation of smart contracts to automate the execution of trading strategies on the blockchain.
- + Utilization of blockchain to ensure transparency and security of trading operations.

## 06 / Exchange Integration

- + Support for major cryptocurrency exchanges to maximize market coverage.
- + Integration with exchange APIs for real-time data retrieval and instantaneous trade execution.



## TECHNICAL DETAILS

# 500

The algorithms employ up to 500 layers of neural networks for comprehensive data analysis.

# 92%

Average prediction accuracy: 92%, as demonstrated through backtesting.

# 150 MS

Average transaction processing time: 150 ms, even during periods of high volatility.

# 10,000

Processing capacity: Capable of handling up to 10,000 orders per second, facilitated by multithreaded analysis.

# 30

Support for over 30 trading indicators, including RSI, MACD, and Bollinger Bands.

## EXPLANATION OF STRATEGIES USED BY OUR BOTS

Our trading bots employ a variety of strategies meticulously designed for effective cryptocurrency portfolio management. Here are some key strategies:

### Trend Strategy:

Bots monitor long-term and short-term trends using indicators such as moving averages and Bollinger Bands to identify entry and exit points in trades.

### Arbitrage Strategies:

Bots instantly react to price differences across different exchanges, enabling successful arbitrage operations.

### Momentum Strategy:

Bots analyze changes in the momentum of asset prices using indicators like RSI and MACD to identify prospective points for executing trades.

### Moving Average Strategies:

Various variations of moving averages are applied to identify short-term and long-term trends, determining moments to enter or exit positions.

### Open Interest (OI) Indicator:

Allows the determination of how much the market supports the current trend, a crucial indicator for decision-making on strategy.

### Trading Volume Indicator:

Analysis of trading volumes helps bots identify confirmed trends and contradictions in market activity.

## TECHNICAL DETAILS OF KEY INDICATORS AND PARAMETERS

Our bots are equipped with various technical indicators and parameters, including:

### RSI (RELATIVE STRENGTH INDEX)

Used to assess the overbought or oversold conditions of an asset.



#### Utilised periods

**1 minute to 50 days**, allowing the analysis to be adapted for both short-term and long-term trading.



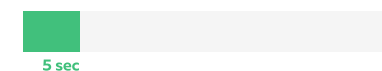
#### Threshold values

**30 (oversold) and 70 (overbought)**.



#### Accuracy of RSI

The average accuracy of RSI signals in a sideways market: **85%**.



#### Calculations are updated

Calculations are updated every **5 seconds** to accommodate dynamic markets.

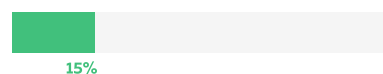
### MACD (MOVING AVERAGE CONVERGENCE DIVERGENCE)

Enables the identification of changes in the momentum of asset prices and determines potential trend reversal points.



#### Parameters for fast and slow EMA

**12 and 26 periods**. Analysis of divergence between the MACD and price increases the accuracy of reversal signals by 15%. The average profitability ratio based on MACD signals: 1.8x compared to other indicators.



#### Divergence

Analysis of divergence between the MACD and price increases the accuracy of reversal signals by **15%**.



#### Average profitability

The average profitability ratio based on MACD signals: **1.8x** compared to other indicators.

### STOCHASTIC OSCILLATOR

Measures the relative position of the current closing price compared to its range over a specific period, helping determine the current market direction.



#### Timeframe utilised

**1 minute to 1 day with a 3-period signal line**.



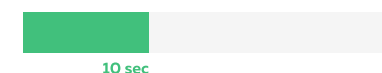
#### Threshold zones

**20 (oversold) and 80 (overbought)**



#### Signal accuracy

Signal accuracy in high market volatility: **88%**.



#### Values are updated

Every **10 seconds** to adapt to rapidly changing conditions

These and other indicators and strategies provide our bots with a broad range of tools to make decisions in the cryptocurrency market, offering investors transparency and an understanding of how bots respond to diverse market conditions.

## UNIFIED TRADING SYSTEM AND BOTS STRATEGIES

Our trading ecosystem is powered by a unified framework that encompasses a diverse set of bot-specific strategies. Each bot is meticulously crafted with unique algorithms tailored to its designated strategy. These strategies, ranging from basic to advanced, define the trading behavior of our bots, ensuring a dynamic and versatile approach to cryptocurrency markets. Explore the intricacies of each bot's strategy and discover a spectrum of trading techniques designed for various market conditions.

### S-Bot (Starter Bot)

Strategy: **Fundamental Impulse (FI)**

The Fundamental Impulse (FI) strategy is based on short-term market impulses driven by news and shifts in market sentiment. The algorithm analyzes volume dynamics and asset volatility, focusing on assets such as BTC, ETH, and BNB. It opens positions during short-term price movements with moderate leverage (x2-x3).



### CP-Bot (Crypto Pulse)

Strategy: **Momentum Convergence Trading (MCT)**

The Momentum Convergence Trading (MCT) strategy is based on the analysis of converging trend movements and market impulses. The bot operates with multiple assets and timeframes, utilizing algorithms to identify moments when momentum and volume strengthen or weaken synchronously. This enables the bot to open and close positions with maximum precision.



### CC-Bot (Coin Craft)

Strategy: **Dynamic Market Flow (DMF)**

The Dynamic Market Flow (DMF) strategy analyzes liquidity flows and directional movements across various timeframes, using advanced algorithms to predict reversals and impulses. The bot adapts to changing market conditions by tracking asset correlations and opening both long and short positions.



### PT-Bot (Pro Trade)

Strategy: **Adaptive Precision Trading (APT)**

The Adaptive Precision Trading (APT) strategy combines technical analysis with artificial intelligence elements to dynamically adapt to market trends. The bot monitors short- and mid-term patterns, analyzes market depth, and identifies correlations between assets to determine the best entry and exit points.



## UNIFIED TRADING SYSTEM AND BOTS STRATEGIES

### CE-Bot (Coin Edge)

Strategy: **Strategic Liquidity Allocation (SLA)**



The Strategic Liquidity Allocation (SLA) strategy focuses on redistributing liquidity across assets with the highest potential for volatility and returns. The bot applies advanced machine learning models to analyze market depth, volume distribution, and price clusters, enabling precise prediction of asset movements in futures and margin markets.

### CM-Bot (Crypto Master)

Strategy: **Dynamic Liquidity Mapping (DLM)**



The Dynamic Liquidity Mapping (DLM) strategy analyzes market order flow and real-time liquidity dynamics to identify areas of heightened activity by major players. The bot monitors market imbalances, detecting moments when supply and demand deviate from standard levels, creating short-term trading opportunities with minimal risk.

### BW-Bot (Bit Wise)

Strategy: **Adaptive Market Synchronization (AMS)**



The Quantum Flow Dynamics (QFD) strategy integrates quantum analysis, machine learning, and deep forecasting algorithms. The bot utilizes hybrid quantum-classical models to simultaneously analyze tens of thousands of market scenarios in real time, identifying correlations that remain undetected by traditional trading algorithms.

### QT-Bot (Quantum Trade)

Strategy: **Quantum Flow Dynamics (QFD)**



The Adaptive Market Synchronization (AMS) strategy relies on dynamic modeling of asset interrelationships and in-depth analysis of market liquidity. AMS employs complex algorithms to identify phases of market cycles, enabling the bot to adapt to volatile conditions and synchronize trading operations with the movements of large institutional capital.

# IMPLEMENTATION OF TRADING BOTS: DEMONSTRATION OF THE TECHNOLOGICAL APPROACH

Below is an example of one of the algorithms used for automated trading. This code demonstrates the basic principle of how our trading bots operate: real-time analysis of market data, utilisation of the RSI indicator to identify optimal entry and exit points, and automation of trading through the Binance API.

This example is a simplified demonstration; real BWIS trading bots employ more advanced and adaptive algorithms designed to minimise risks and maximise profits.

```

from binance.client import Client
from binance.exceptions import BinanceAPIException
import pandas as pd
from datetime import datetime
import time
import pytz

# Binance API credentials
api_key = 'your_binance_api_key'
api_secret = 'your_binance_api_secret'
client = Client(api_key, api_secret)

# Symbol for trading
binance_symbol = 'QNTUSDT'

# Function to calculate RSI
def calculate_rsi(data, periods=14, ema=True):
    if len(data) < periods:
        print(f'Not enough data to calculate RSI. Data length: {len(data)}')
        return pd.Series([float('nan')] * len(data))

    delta = data.diff(1).dropna()
    gain = delta.where(delta > 0, 0)
    loss = -delta.where(delta < 0, 0)

    if ema:
        avg_gain = gain.ewm(com=periods-1, min_periods=periods,
                             adjust=False).mean()
        avg_loss = loss.ewm(com=periods-1, min_periods=periods,
                             adjust=False).mean()
    else:
        avg_gain = gain.rolling(window=periods, min_periods=periods).mean()
        avg_loss = loss.rolling(window=periods, min_periods=periods).mean()

    rs = avg_gain / avg_loss
    rsi = 100 - (100 / (1 + rs))
    return rsi

# Fetch historical data
def fetch_latest_data(symbol, interval, limit=150):
    try:
        klines = client.get_klines(symbol=symbol, interval=interval, limit=limit)
    except BinanceAPIException as e:
        print(f'Binance API exception occurred: {e.status_code} - {e.message}')
        return pd.DataFrame()

    if not klines:
        print("No data returned from Binance API")
        return pd.DataFrame()

    data = pd.DataFrame(klines, columns=[
        'timestamp', 'open', 'high', 'low', 'close', 'volume',
        'close_time', 'quote_av', 'trades', 'tb_base_av', 'tb_quote_av', 'ignore'
    ])
    data['close'] = pd.to_numeric(data['close'], errors='coerce')
    return data

# Fetch current price
def fetch_current_price(symbol):
    try:
        ticker = client.get_symbol_ticker(symbol=symbol)
        return float(ticker['price'])
    except BinanceAPIException as e:
        print(f'Binance API exception occurred: {e.status_code} - {e.message}')
        return None

# Trading strategy implementation
def execute_trading_strategy(rsi_last_value, bank, holdings, buy_price, tp_1_hit):
    first_tp_perc = 1.0
    sec_tp_perc = 1.5
    sl_perc = -2.0
    buy_rsi_threshold = 30.0

    current_price = fetch_current_price(binance_symbol)
    if current_price is None:
        return bank, holdings, buy_price, tp_1_hit

    if rsi_last_value < buy_rsi_threshold and holdings == 0:
        amount_to_invest = bank * 0.5
        quantity = amount_to_invest / current_price

        try:
            client.order_market_buy(symbol=binance_symbol, quantity=quantity)
            print(f'Buy order executed: {quantity} at {current_price}')
            bank -= amount_to_invest
            holdings += quantity
            buy_price = current_price
        except BinanceAPIException as e:
            print(f'Error executing buy order: {e}')

    elif holdings > 0:
        profit_percent = (current_price - buy_price) / buy_price * 100

        if profit_percent >= first_tp_perc or rsi_last_value > 50:
            sell_quantity = holdings * 0.8
            try:
                client.order_market_sell(symbol=binance_symbol, quantity=sell_quantity)
                print(f'First TP sell order executed: {sell_quantity} at {current_price}')
                holdings -= sell_quantity
                bank += sell_quantity * current_price
                tp_1_hit = True
            except BinanceAPIException as e:
                print(f'Error executing sell order: {e}')

        elif profit_percent >= sec_tp_perc:
            try:
                client.order_market_sell(symbol=binance_symbol, quantity=holdings)
                print(f'Second TP sell order executed: {holdings} at {current_price}')
                bank += holdings * current_price
                holdings = 0
                tp_1_hit = False
            except BinanceAPIException as e:
                print(f'Error executing sell order: {e}')

        elif profit_percent <= sl_perc:
            try:
                client.order_market_sell(symbol=binance_symbol, quantity=holdings)
                print(f'Stop loss sell order executed: {holdings} at {current_price}')
                bank += holdings * current_price
                holdings = 0
                tp_1_hit = False
            except BinanceAPIException as e:
                print(f'Error executing stop loss order: {e}')

    return bank, holdings, buy_price, tp_1_hit

# Main function
def main():
    interval = '5m'
    bank = 1000
    holdings = 0
    buy_price = 0
    tp_1_hit = False

    print("Running the bot...")

    while True:
        try:
            data = fetch_latest_data(binance_symbol, interval)

            if not data.empty and 'close' in data.columns:
                rsi_values = calculate_rsi(data['close'])

                if not rsi_values.empty:
                    rsi_last_value = rsi_values.iloc[-1]
                    print(f'RSI at the last candle close: {rsi_last_value:2f}')

                    bank, holdings, buy_price, tp_1_hit = execute_trading_strategy(
                        rsi_last_value, bank, holdings, buy_price, tp_1_hit
                    )

            time.sleep(300) # Wait for the next 5-minute interval

        except Exception as e:
            print(f'An error occurred: {e}')
            time.sleep(60) # Wait before retrying

if name == "main":
    main()

```

## IMPORTANT:

The provided code is for informational purposes only and does not reflect the full complexity or effectiveness of BWIS trading strategies.

Our actual algorithms incorporate machine learning, big data analysis, and more sophisticated indicators.

Our team continuously enhances the algorithms to ensure stable returns and transparency for investors. This example highlights only a fraction of the technologies underpinning our solutions.

# CRYPTOCURRENCY EXCHANGE INTEGRATION

## List of cryptocurrency exchanges

Billion Wise Investment Solutions (BWIS) strategically integrated its trading bots with leading cryptocurrency exchanges, ensuring broad market coverage and maximum opportunities for optimal trading decisions. Our innovative bots successfully interact with various platforms, including:



### Binance

Our trading bots actively engage with this largest cryptocurrency exchange, executing efficient trading strategies.

- ✓ Daily data processing volume: **500,000 orders**.
- ✓ Average trade execution time: **100 ms**.
- ✓ Full access to the **spot market, futures, and liquid pairs**.



### Bybit

Our bots successfully trade on the Bybit platform, focusing on derivatives and margin trading.

- ✓ Optimised strategies for **derivatives and margin trading**.
- ✓ Support for **high-frequency trading (HFT)** with a capacity of **10,000 orders** per minute.



### OKX

Integration with this global exchange provides our bots with access to diverse trading instruments and products.

- ✓ Access to **20+ unique tools**, including options and futures.
- ✓ Trade success rate on the platform: **89%**, driven by liquidity analysis.



### Coinbase Exchange

BWIS bots are successfully integrated with the platform, providing access to a wide range of cryptocurrency assets.

- ✓ Utilisation of advanced algorithms for news and data analysis.
- ✓ Average trade profitability ratio: **1.6x** compared to standard strategies.



### KuCoin

BWIS trading bots effectively interact with the innovative KuCoin exchange, conducting trades with various cryptocurrencies.

- ✓ Integration with over **50 trading pairs**, including low-capitalisation altcoins.
- ✓ Average data processing time: **150 ms**.



### Kraken

Our bots interact with the highly liquid Kraken markets, applying advanced trading strategies.

- ✓ Support for in-depth liquidity analysis using **VWAP**.
- ✓ High order execution accuracy: **up to 98%**.



### Bitget

Integration with the Bitget exchange enables our bots to trade cryptocurrency derivatives.

- ✓ Full integration of derivatives and arbitrage algorithms.
- ✓ Maximum profitability in volatile markets: **22% per month**.



### Bitstamp

Integration with this venerable exchange ensures stability and reliability in trading for our bots.

- ✓ Stable trade volume processing ensured by the exchange's low volatility.
- ✓ Average daily trading volume on the platform: **5 000 000 USDC**.

# SECURITY PROTOCOLS FOR EXCHANGE API INTERACTION



## Data Encryption

All information exchanged between the bots and exchanges is encrypted using **AES-256**, one of the most secure encryption standards globally.

Data transmission employs **TLS 1.3**, preventing interception or tampering.



## Multi-Factor Authentication

Each bot uses API keys with **HMAC (Hash-based Message Authentication Code)** support to verify request authenticity.

Multi-factor authentication restricts access to keys, adding an extra layer of security.



## Access Rights Restriction

All API keys are configured with minimal permissions, granting bots only the functionalities required for operations (e.g., trading without withdrawal rights).

**IP-Whitelist** is implemented for each bot, allowing API access only from authorized IP addresses.



## Regular Security Audits

Our bots undergo monthly vulnerability testing, including an assessment of API communication protocols.

Quarterly external audits are conducted by certified security experts.



## Activity Monitoring

Bots monitor and analyze every operation via the API in real-time. Suspicious activities, such as exceeding request limits, are automatically blocked.

The monitoring system incorporates anomaly detection based on machine learning algorithms, reducing the risk of exploiting unknown vulnerabilities.



## Error Handling and Contingency Management

Built-in mechanisms for operation restarts ensure stable performance even in case of temporary exchange outages.

The average recovery time after failures is less than **5 seconds**, thanks to adaptive reconnection algorithms.



## Update Frequency

All keys used by the bots are automatically refreshed every **30 days** to prevent compromise.

Security patches for the bots are released **at least once every two weeks**, addressing potential threats in a timely manner.



## Additional Protective Measures

**Rate Limiting** ensures that bots do not exceed the allowable number of requests per minute, reducing the risk of being blocked by exchanges.

All bot activity logs are stored in secure archives and retained for at least **1 year** for analysis.

These security protocols guarantee the efficient and safe operation of our bots with exchange APIs, enabling investors to trust our solutions even in highly volatile market conditions.

## SECURITY AND RISK MANAGEMENT

Billion Wise Investment Solutions (BWIS) aims to ensure maximum security and effective risk management for investors using advanced algorithms and tools. Our trading bots are equipped with high-tech risk management and security methods, including:

### RISK MANAGEMENT ALGORITHMS

#### Focus on a Single Trading Pair

Each BWIS bot focuses exclusively on a single trading pair, enabling deep analysis of its dynamics and minimising the risk of errors. This approach prevents divided attention, improving forecast accuracy and trading efficiency.

#### Dynamic Stop-Loss Orders

Stop-loss levels are set and adjusted dynamically for each pair based on volatility to mitigate significant losses.

#### Parameter Rebalancing

When market conditions change, the bot automatically adjusts its trading parameters to maintain effectiveness in all scenarios.

### RISK MINIMISATION TOOLS

#### Market Data Analysis

The bots leverage historical and real-time data for each pair, evaluating metrics such as trading volume, trends, and volatility to make informed decisions.

#### Risk Concentration Control

Trade sizes and operation frequencies are tailored to the specific characteristics of the selected pair, preventing overexposure.

#### Arbitrage Opportunities

When a selected pair is suitable for arbitrage, the bot applies this strategy to minimise risks further.

### OPERATIONAL SECURITY

#### Multi-Layered Data Protection

All trade and bot configuration data are secured with AES-256 encryption, with access controlled through multi-factor authentication.

#### Isolated Management

Each pair is managed through an individual strategy, eliminating the influence of external factors or other assets.

### TRANSPARENCY AND CONTROL

#### Real-Time Interface

Users can monitor bot performance at any time, including detailed reports on the selected trading pair.

#### API Options

Reports in API format are available for premium clients, allowing seamless integration with analytical platforms.

#### Regular Updates

The bot automatically generates performance reports, detailing changes in the parameters of the selected pair and trade results.

**Billion Wise Investment Solutions strives to create a secure and reliable investment environment, offering high-tech risk management tools and security measures to maximize potential profits and safeguard the investments of our clients.**

# INVESTMENT OPPORTUNITIES AND PROFIT GUARANTEES

## DIVERSITY OF TRADING BOTS

Billion Wise Investment Solutions (BWIS) offers a wide range of investment opportunities using various trading bots. Investors have a unique opportunity to choose a bot that aligns with their investment goals and preferences. The cost of bots, their operational durations, and potential profitability provide investors with flexibility and portfolio diversification opportunities.



## PROFIT GUARANTEES AND INVESTMENT SECURITY

During periods of heightened market volatility or events requiring special caution, some bots may temporarily suspend trading to protect investments. Striving to ensure safety and stability for investors, Billion Wise Investment Solutions guarantees the payment of minimum profits on days when bots do not engage in trading activity. Billion Wise Investment Solutions ensures the payment of minimum profits on days when a bot is active but does not execute trading operations. The minimum profit is determined in accordance with the conditions specified for the specific bot during the corresponding activity period. This provides investors with reliable guarantees and investment security.

This strategic decision aims to minimize risks during periods of market instability, ensuring investors' confidence in the safety of their investments. BWIS remains a transparent and responsible partner platform, where investor safety is our priority.

# TRADING BOTS DESCRIPTION

## S-Bot Starter Bot



Trading capital: **100–1 000\$**

Operating period: **10 days**

Investor profits: **0.30% - 1%**

(0.60% - 2% total daily profit, shared between the investor and the company)

Operating schedule: **Monday - Saturday**

(Sunday: Maintenance)

Profit withdrawal: **24/7**

Capital: **Deposit body return**

Trading pairs: **BTC/USDT, ETH/USDT, BNB/USDT**

Strategy: **Fundamental Impulse (FI)**

The Fundamental Impulse (FI) strategy is based on short-term market impulses driven by news and shifts in market sentiment. The algorithm analyzes volume dynamics and asset volatility, focusing on assets such as BTC, ETH, and BNB. It opens positions during short-term price movements with moderate leverage (x2-x3).

## CP-Bot Crypto Pulse



Trading capital: **1 000–5 000\$**

Operating period: **25 days**

Investor profits: **0.55% - 1.15%**

(1.10% - 2.30% total daily profit, shared between the investor and the company)

Operating schedule: **Monday - Saturday**

(Sunday: Maintenance)

Profit withdrawal: **24/7**

Capital: **Deposit body return**

Trading pairs: **BTC/USDT, ETH/USDT, LTC/USDT, TRX/USDT, BNB/USDT**

Strategy: **Momentum Convergence Trading (MCT)**

The Momentum Convergence Trading (MCT) strategy is based on the analysis of converging trend movements and market impulses. The bot operates with multiple assets and timeframes, utilizing algorithms to identify moments when momentum and volume strengthen or weaken synchronously. This enables the bot to open and close positions with maximum precision.

## CC-Bot Coin Craft



Trading capital: **2 500–10 000\$**

Operating period: **60 days**

Investor profits: **2.05% - 2.55%** (4.10% - 5.10% total daily profit, shared between the investor and the company)

Operating schedule: **Monday - Saturday**

(Sunday: Maintenance)

Profit withdrawal: **24/7**

Capital: **Not return** (Deposit body is absorbed by the bot for using a more profitable strategy)

Trading pairs: **BTC/USDT, ETH/USDT, LTC/USDT, BNB/USDT, MATIC/USDT, LINK/USDT, DASH/USDT, ADA/USDT, XLM/USDT, ATOM/USDT**

Strategy: **Dynamic Market Flow (DMF)**

The Dynamic Market Flow (DMF) strategy analyzes liquidity flows and directional movements across various timeframes, using advanced algorithms to predict reversals and impulses. The bot adapts to changing market conditions by tracking asset correlations and opening both long and short positions.

# TRADING BOTS DESCRIPTION

## PT-Bot Pro Trade



Trading capital: **10 000–25 000\$**

Operating period: **40 days**

Investor profits: **0.80% - 1.35%**

(1.60% - 2.70% total daily profit, shared between the investor and the company)

Operating schedule: **Monday - Saturday**  
(Sunday: Maintenance)

Profit withdrawal: **24/7**

Capital: **Deposit body return**

Trading pairs: **BTC/USDT, ETH/USDT, LTC/USDT, TRX/USDT, BNB/USDT, MATIC/USDT, DASH/USDT, ADA/USDT, XRP/USDT**

Strategy: **Adaptive Precision Trading (APT)**

The Adaptive Precision Trading (APT) strategy combines technical analysis with artificial intelligence elements to dynamically adapt to market trends. The bot monitors short- and mid-term patterns, analyzes market depth, and identifies correlations between assets to determine the best entry and exit points.

## CE-Bot Coin Edge



Trading capital: **15 000–35 000\$**

Operating period: **60 days**

Investor profits: **2.35% - 2.95%**

(4.70% - 5.90% total daily profit, shared between the investor and the company)

Operating schedule: **Monday - Saturday**  
(Sunday: Maintenance)

Profit withdrawal: **24/7**

Capital: **Not return** (Deposit body is absorbed by the bot for using a more profitable strategy)

Trading pairs: **BTC/USDT, ETH/USDT, LTC/USDT, TRX/USDT, BNB/USDT, MATIC/USDT, LINK/USDT, DASH/USDT, ADA/USDT, XRP/USDT, SOL/USDT, DOT/USDT, ATOM/USDT**

Strategy: **Strategic Liquidity Allocation (SLA)**

The Strategic Liquidity Allocation (SLA) strategy focuses on redistributing liquidity across assets with the highest potential for volatility and returns. The bot applies advanced machine learning models to analyze market depth, volume distribution, and price clusters, enabling precise prediction of asset movements in futures and margin markets.

## CM-Bot Crypto Master



Trading capital: **25 000–45 000\$**

Operating period: **50 days**

Investor profits: **1.00% - 1.75%** (2.00% -

3.50% total daily profit, shared between the investor and the company)

Operating schedule: **Monday - Saturday**  
(Sunday: Maintenance)

Profit withdrawal: **24/7**

Capital: **Deposit body return**

Trading pairs: **BTC/USDT, ETH/USDT, LTC/USDT, TRX/USDT, BNB/USDT, MATIC/USDT, LINK/USDT, DASH/USDT, ADA/USDT, XRP/USDT, SOL/USDT, ATOM/USDT**

Strategy: **Dynamic Liquidity Mapping (DLM)**

The Dynamic Liquidity Mapping (DLM) strategy analyzes market order flow and real-time liquidity dynamics to identify areas of heightened activity by major players. The bot monitors market imbalances, detecting moments when supply and demand deviate from standard levels, creating short-term trading opportunities with minimal risk.

# TRADING BOTS DESCRIPTION

## BW-Bot Bit Wise



Trading capital: **50 000–150 000\$**

Operating period: **60 days**

Investor profits: **1.45% - 2.95%** (2.90% - 5.90% total daily profit, shared between the investor and the company)

Operating schedule: **Monday - Saturday**  
(Sunday: Maintenance)

Profit withdrawal: **24/7**

Capital: **Deposit body return**

Trading pairs: **BTC/USDT, ETH/USDT, LTC/USDT, TRX/USDT, BNB/USDT, MATIC/USDT, LINK/USDT, DASH/USDT, ADA/USDT, XRP/USDT, SOL/USDT, DOT/USDT, AVAX/USDT, XLM/USDT, ATOM/USDT**

Strategy: **Adaptive Market Synchronization (AMS)**

The Adaptive Market Synchronization (AMS) strategy relies on dynamic modeling of asset interrelationships and in-depth analysis of market liquidity. AMS employs complex algorithms to identify phases of market cycles, enabling the bot to adapt to volatile conditions and synchronize trading operations with the movements of large institutional capital.

## QT-Bot Quantum Trade



Trading capital: **75 000–250 000\$**

Operating period: **60 days**

Investor profits: **3.15% - 4.10%**  
(6.30% - 8.20% total daily profit, shared between the investor and the company)

Operating schedule: **Monday - Saturday**  
(Sunday: Maintenance)

Profit withdrawal: **24/7**

Capital: **Not return** (Deposit body is absorbed by the bot for using a more profitable strategy)

Trading pairs: **BTC/USDT, ETH/USDT, LTC/USDT, TRX/USDT, BNB/USDT, MATIC/USDT, LINK/USDT, DASH/USDT, ADA/USDT, XRP/USDT, SOL/USDT, DOT/USDT, AVAX/USDT, DOGE/USDT, XLM/USDT, ATOM/USDT**

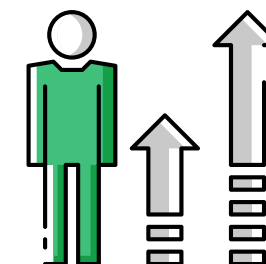
Strategy: **Quantum Flow Dynamics (QFD)**

The Quantum Flow Dynamics (QFD) strategy integrates quantum analysis, machine learning, and deep forecasting algorithms. The bot utilizes hybrid quantum-classical models to simultaneously analyze tens of thousands of market scenarios in real time, identifying correlations that remain undetected by traditional trading algorithms.

## INITIAL LEVEL

At the initial level, investors can choose the S-Bot (Starter Bot) with an affordable cost of 100 USD and a duration of 10 days. With this bot, investors can assess the simplicity and effectiveness of trading strategies provided by BWIS.

---



## ADVANCED OPPORTUNITIES

Investors seeking more advanced strategies can opt for intermediate and high-level bots, such as CP-Bot (Crypto Pulse), PT-Bot (Pro Trade), and others. These bots offer more complex and intelligent approaches to trading, potentially leading to increased profitability.

---



## MAXIMIZING PROFITS

Investors aiming for maximum profits can explore higher-level bots like BW-Bot (Bit Wise), CC-Bot (Coin Craft), CE-Bot (Coin Edge), and QT-Bot (Quantum Trade). These bots employ advanced strategies, utilizing technologies and artificial intelligence to maximize trading efficiency.



# ADVANTAGES AND UNIQUE FEATURES

## AUTOMATED STRATEGIES

---

### Unique Trading Strategies

- ✓ **Individual Approach:** Our trading bots utilize unique strategies adapted to various market conditions.
- ✓ **Algorithm Diversity:** We offer a variety of strategies, including momentum, arbitrage, scaling, and others, to meet diverse investor needs.

### Benefits of Using Algorithmic Bots

- ✓ **Efficiency:** Automated trading strategies enable high efficiency while minimizing human errors.
- ✓ **Instant Reaction:** Bots respond to market changes in real-time, ensuring swift execution of trades.

## TRANSPARENCY AND CONTROL

---

### Ensuring Operational Transparency

- ✓ **Real-time Information:** Our investors receive real-time information about each trading operation, ensuring maximum transparency.
- ✓ **Detailed Reports:** We provide detailed reports on trading operations so that investors can fully understand the processes.

## CONTROL AND MONITORING CAPABILITIES

---

- ✓ **Investor Dashboards:** Investors have access to personal dashboards where they can monitor their investments and trading results.
- ✓ **Risk Management Tools:** We provide tools for risk control and real-time investment management.

Billion Wise ensures unique trading strategies and operational transparency, providing investors with complete control over their investments.



# RISKS AND PROTECTION

## RISK-FREE INVESTMENTS

---

### Complete Risk Protection

- ✓ **Unprecedented Guarantee:** We take on all possible risks associated with cryptocurrency trading, ensuring investors absolute protection.
- ✓ **Financial Security:** Our company guarantees full compensation for any losses related to market dynamics changes.

### Transparency and Clarity

- ✓ **No Hidden Risks:** Investors can be confident that there are no hidden risks associated with using our trading bots.
- ✓ **Transparent Policy:** We provide a clear and transparent policy, ensuring that investors are fully informed about our commitments.

## SECURITY AND CONFIDENCE

---

### Secure Investing

- ✓ **Financial Security:** Investors can rest assured that their financial security is our priority, and we guarantee complete protection of their investments.
- ✓ **Risk Management Strategies:** Our advanced risk management strategies minimize potential losses for investors.

### Investor Protection

- ✓ **Unprecedented Protection:** We provide investors with unparalleled protection, where all risks lie on our side, ensuring the safety of their investments.
- ✓ **BWIS Authority:** Investors delegate all risks and responsibilities to our company, ensuring carefree and risk-free investing.

Billion Wise aims to provide safe and risk-free investing, where all risks are compensated, and investors can enjoy stable profits without worries.





**BILLION  
WISE  
INVESTMENT  
SOLUTIONS**

# AFFIRMATION AND WARNING

---

## **Affirmation**

All provided information is accurate and up-to-date at the time of compiling this White Paper. We strive to ensure the maximum accuracy and reliability of the data provided to our investors.

## **Investment Risk Warning**

Please carefully review the terms of use before making any investments. Remember that past results do not guarantee future success, and investments may be subject to changes.

## **Acknowledgment**

We express sincere gratitude for your interest in Billion Wise Investment Solutions. In case of additional questions or requests for further information, feel free to reach out. We are always ready to provide support and assistance. Thank you for choosing Billion Wise Investment Solutions for your investments.